

Perfect solutions for

Grit Handling Equipment
Clarifiers
Cross Collectors
Centrifuges



Wastewater Treatment Industry

- *Sealed stainless steel torque limiters*
- *Housed torque limiters*
- *Torque transducer couplings*

www.mayr.de

IMG.405.02.GB

mayr[®]
power
transmission

EAS[®]-Compact

The sealed torque limiter

Mechanical torque limiters are essential components in today's wastewater industry. They eliminate costly downtime and provide accurate and reliable torque overload protection. Equipment such as bar screens and longitudinal clarifiers often jam due to foreign objects and other disturbances in the wastewater process. These jams can suddenly increase operating torque which may result in costly downtime and damage to the equipment. Conventional torque limiters are inaccurate and they tend to wear out prematurely due to the harsh operating environment of a wastewater plant. In order to provide superior solutions, **mayr**[®], the world-wide leader in torque limiters, has developed a range of products specifically designed for the wastewater industry.

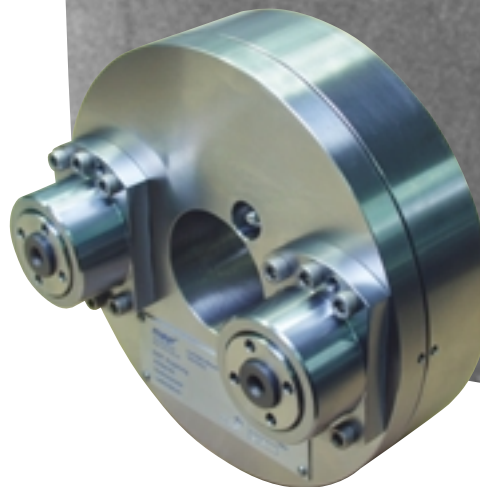
- Zero backlash torque limiter
- Completely enclosed with stainless steel cover
- Precise disengaging accuracy ($\pm 5\%$) even under operation close to the setting torque.
- Disconnection of load between input and output
- Automatic re-engagement
- Low inertia through compact design
- Long service life



EAS[®]-overload clutches

For high torque rating

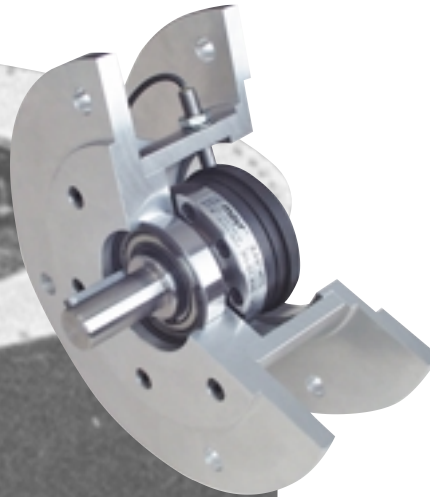
- All external parts stainless steel
- Modular overload element design
- Complete disengagement of input and output
- Easy manual re-engagement
- High disengaging accuracy
- Easy, time-saving inspection and maintenance of clutch elements
- Large bore and torque capacity
- Optional manual release



Housed Torque Limiter

EAS[®]-HTL

- Ball/detent overload clutch enclosed in IEC/NEMA flanged housing
- Zero backlash torque limiter
- Integrated limit switch
- Simple torque adjustment
- Versatile functions

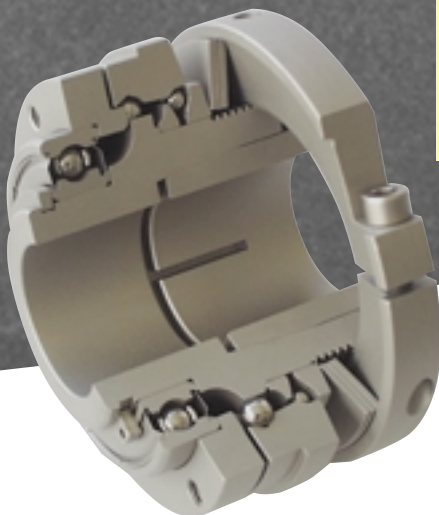


The EAS[®]-Compact, HTL and EAS[®]-overload clutches combine the benefits that are important in wastewater applications. From the headworks, to the clarifiers, to the centrifuges, *mayr*[®] provides an engineered solution to your torque limiting needs.

High speed torque limiter

EAS[®]-Compact Overload Clutches

- Reliable drive disconnection in case of an overload
- Backlash-free torque transmission
- Disengaged condition free from residual torque
- Low inertia through compact design
- Long service life



Worldwide representation

Headquarters

Chr. Mayr
GmbH + Co. KG
Eichenstrasse 1
87665 Mauerstetten
Tel.: 49-83 41/8 04-241
Fax: 49-83 41/804422
<http://www.mayr.de>

Great Britain

Mayr Transmissions Ltd.
Valley Road, Business Park
Keighley, BD21 4LZ
West Yorkshire
Tel.: 0 15 35/66 39 00
Fax: 0 15 35/66 32 61
sales@mayr.co.uk

Italy

Mayr Italia S.r.l.
Viale Veneto, 3
35020 Saonara (PD)
Tel.: 0 49/8 79 10 20
Fax: 0 49/8 79 10 22
info@mayr-italia.it

France

Mayr France S.A.
Z.A.L. du Minopole
BP 16
62160 Bully-Les-Mines
Tel.: 03.21.72.91.91
Fax: 03.21.29.71.77
contact@mayr.fr

Switzerland

Mayr Kupplungen AG
Tobeläckerstrasse 11
8212 Neuhausen
am Rheinfall
Tel.: 0 52/6 74 08 70
Fax: 0 52/6 74 08 75
info@mayr.ch

USA

Mayr Corporation
4 North Street
Waldwick
NJ 07463
Tel.: 2 01/4 45-72 10
Fax: 2 01/4 45-80 19
info@mayrcorp.com

Singapore

Mayr Transmission (S)
Pte. Ltd. – Blk 133
Jurong East Street 13
Unit 03-291
Singapore 600133 Asean
Tel.: 00 65/6560 1230
Fax: 00 65/6560 1000
mayr@pacific.net.sg

Korea

Mayr Korea
60-11, Woongnam-Dong
ROK Changwon
Rep. of Korea
Tel.: 055/262-4024
Fax: 055/262-4025
info@mayrkorea.com

Taiwan

(for machine tool manuf.)
German Tech Auto Co., Ltd.
No. 58, Wu Chuan Road
Wu-Ku Industrial Park
Taipei Hsien, Taiwan
Tel.: 02/22990237
Fax: 02/22990239
steve@zfgta.com.tw

China

Driveline Technology
Co., Ltd.
Weihai Road 350
Room 401 – 403
200041 Shanghai
Tel.: 021/6267-9779/-3599
Fax: 021/6267-2190
dtcshanghai@online.sh.cn



Australia

Transmission Australia Pty. Ltd.
Trading As Reynolds Dynamics
1B, 310-312 Boundary Road
3172 Dingley, Victoria
Australien
Tel.: 039/551 6633
Fax: 039/551 6725
sales@reynoldsdynamics.com.au

New Zealand

Saeco A.D.I.Ltd.
36 Hastie Avenue
Mangere East
P. O. Box 22-256
Otahuhu-Auckland
Tel.: 09/634 7540
Fax: 09/634 7552
grant@saeco.co.nz

India

National Engineering
Company (NENCO)
J-225, M.I.D.C. Bhosari
Pune 411 026
Tel.: 020/7474529
Fax: 020/7470229
nenco@vsnl.com

Japan

Shinwa Trading Co. Ltd.
1-3, 3-Chome
Goko-Dori, Chuo-ku
Kobe City
Tel.: 078/2512311
Fax: 078/2652676
ohta@shinwa-kobe.co.jp

South Africa

Torque Transfer
Private Bag 9
Elandsfontein 1406
Tel.: 011/3458000
Fax: 011/3922561
torque@bearings.co.za

Austria
Benelux States
Brazil
Canada
Czech Republic
Denmark
Finland
Greece

Hongkong
Hungary
Indonesia
Israel
Malaysia
Norway
Philippines
Poland

Russia
Slovakia
Slovenia
Spain
Sweden
Thailand
Turkey

Note:
If a country is not
shown, please refer
to headquarters or
our web site to be
advised of the
nearest responsible
agent.